



## Demolition Hammer

Model: *XP-45HD-1*

### HANDLING INSTRUCTIONS



Before using this XINPU demolition hammer, please carefully read though these **HANDLING INSTRUCTIONS**. Ensure that you know how the machine works, and how it should be operated. Maintain the machine in accordance with the instructions, and make certain that the machine work correctly, please store this instriation and other enclosed documents with the machine together.



Bj:2013

Zhejiang Xinpu Industrial & Commercial Co., Ltd.

106, No. 330 National Road, Huajie Industrial Zone, Yongkang City, Zhejiang 321300, P. R. China

# Application

This hammer should be applied to breaking concrete, chipping off concrete, grooving, bar cutting, and driving piles in installation of piping and wiring, unitary facility installation, machinery installation water supply, and drainage work, interior jobs, harbor facilities and other civil engineering work etc..

## Contents

1. Machine information
2. Safety instruction
3. Assembly
4. Operation
5. Maintenance

## 1. Machine information

### Technical specifications

Machine Type	XP-45HD-1
Voltage	AC 230V
Frequency	50Hz
Input power	1200W
Impact rate	3000/min
Weight	6.02kg
Impact energy	12J
Bit lock style	17mm hexagon flat shank lock system
Sound pressure values (in accordance with 2000/14/EC)	89dB (A)
Guaranteed Sound power values (in accordance with 2000/14/EC)	105dB (A)
Vibration	Main handle: $a_{h,Cheq}$ : 25.78 $m/s^2$ $K=4.26m/s^2$ Auxiliary handle: $a_{h,Cheq}$ : 10.42 $m/s^2$ $K=1.5m/s^2$

### Standard accessories

Hexagon bar wrench 5mm(for M6)	1 piece
Hexagon bar wrench 3mm(for M4)	1 piece
Amphibious screwdriver	1 piece
One box of grease	30g (one box)
Bull point chisel(17*280mm)	1 piece
flat chisel(17*280mm)	1 piece
Carbon brush(6*10*14mm)	2 pieces

## Optional accessories (sold separately)

Notice: Optional accessories (sold separately) are recommended only for **XINPU** tool for specified purpose in manual, any other brand accessories or attachments used may present risk of injury.

### 1. Point chisel Hexagon size17\*280 length (Unit: mm)



### 2. Flat chisel Hexagon size17\*280 length (Unit: mm)



### 3. Big flat chisel Hexagon size17\*280 length\*50Cutting width (Unit: mm)



### 4. Tine spade Hexagon size17\*500 length (Unit: mm)



### 5. Groove chisel Hexagon size17\*280 length (Unit: mm)



### 6. 4PCS KITS Hexagon size17\*280 length (Unit: mm)



### 7. Lubricate grease one box 30g



## 2. Safety instructions

In this operator's manual/or machine's labels following symbols are used:



Read the manual carefully



Accordance with essential applicable safety of European directives



Denote risk of personal injury, loss of life or damage to the tool in case of nonobservance of the instruction in this manual.



Indicate electrical shock hazard.



Immediately unplug the plug from the main electricity in the case that the cord gets damage and during maintenance.



Wear ear and eye protection.



Faulty and /or discarded electrical or electronic apparatus have to be collected at the appropriate recycling location.



The guaranteed Noise Value according to Noise Directive

## General Power Tool Safety Warnings



**WARNING** Read all safety warnings and all instructions *Failure to follow all warnings and instructions may result in electric shock, fire and/or serious injury.*

Save all warnings and instructions for future reference

The term “power tool” in the warnings refer to your mains operated (corded) power tool or battery operated (cordless) power tool.

### 1) Work area

- a) Keep work area clean and well lit. *Cluttered and dark areas invite accidents.*
- b) Do not operate power tools in explosive atmospheres, such as in the presence of flammable liquids, gases or dust. *Power tools create sparks which may ignite the dust or fumes.*
- c) Keep children and bystanders away while operating a power tool. *Distractions can cause you to lose control.*

### 2) Electrical safety

- a) Power tool plugs must match the outlet. Never modify the plug in any way. Do not use any adapter plugs with earthed (grounded) power tools. *Unmodified plugs and matching outlets will reduce risk of electric shock.*
- b) Avoid body contact with earthed or grounded surfaces such as pipes, radiators, ranges and refrigerators. *There is an increased risk of electric shock if your body is earthed or grounded.*
- c) Do not expose power tools to rain or wet conditions. *Water entering a power tool will increase the risk of electric shock.*
- d) Do not abuse the cord. Never use the cord for carrying, pulling or unplugging the power tool. Keep cord away from heat, oil, sharp edges or moving parts. *Damaged or entangled cords increase the risk of electric shock.*
- e) When operating a power tool outdoors, use an extension cord suitable for outdoor use. *Use of a cord suitable for outdoor use reduces the risk of electric shock.*
- f) If operating a power tools in a damp location is unavoidable, use a residual current device (RCD) protected supply. *Use of an RCD reduces the risk of electric shock.*

### 3) Personal safety

- a) Stay alert, watch what you are doing and use common sense when operating a power tool. Do not use a power tool while you are tired or under the influence of drugs, alcohol or medication. *A moment of inattention while operating power tools may result in serious personal injury.*
- b) Use safety equipment. Always wear eye protection. *Protective equipment such as dust mask, non-skid safety shoes, hard hat, or hearing protection used for appropriate conditions will reduce personal injuries.*
- c) Avoid accidental starting. Ensure the switch is in the off position before plugging in. *Carrying power tools with*

*your finger on the switch or plugging in power tools that have the switch on invites accidents.*

- d) Remove any adjusting key or wrench before turning the power tool on. *A wrench or a key left attached to a rotating part of the power tool may result in personal injury.*
- e) Do not overreach. Keep proper footing and balance at all times. *This enables better control of the power tool in unexpected situations.*
- f) Dress properly. Do not wear loose clothing or jewellery. Keep your hair, clothing and gloves away from moving parts. *Loose clothes, jewellery or long hair can be caught in moving parts.*
- g) If devices are provided for the connection of dust extraction and collection facilities, ensure these are connected and properly used. *Use of these devices can reduce dust related hazards.*

#### **4) Power tool use and care**

- a) Do not force the power tool. Use the correct power tool for your application. *The correct power tool will do the job better and safer at the rate for which it was designed.*
- b) Do not use the power tool if the switch does not turn it on and off. *Any power tool that cannot be controlled with the switch is dangerous and must be repaired.*
- c) Disconnect the plug from the power source before making any adjustments, changing accessories, or storing power tools. *Such preventive safety measures reduce the risk of starting the power tool accidentally.*
- d) Store idle power tools out of the reach of children and do not allow persons unfamiliar with the power tool or these instructions to operate the power tool. *Power tools are dangerous in the hands of untrained users.*
- e) Maintain power tools. Check for misalignment or binding of moving parts, breakage of parts and any other condition that may affect the power tools operation. If damaged, have the power tool repaired before use. *Many accidents are caused by poorly maintained power tools.*
- f) Keep cutting tools sharp and clean. *Properly maintained cutting tools with sharp cutting edges are less likely to bind and are easier to control;*
- g) Use the power tool, accessories and tool bits etc., in accordance with these instructions and in the manner intended for the particular type of power tool, taking into account the working conditions and the work to be performed. *Use of the power tool for operations different from intended could result in a hazardous situation.*

#### **5) Service**

- a) Have your power tool serviced by a qualified repair person using only identical replacement parts. *This will ensure that the safety of the power tool is maintained.*

#### **Special requirements for Chisel**

- **Wear ear protectors with impact drills.** *Exposure to noise can cause hearing loss.*
- **Use auxiliary handles supplied with the tool.** *Loss of control can cause personal injury.*

## Additional safety rules:



1. Wear a hard hat (safety helmet), safety glasses and /or face shield. It is also highly recommended that you wear a dust mask, ear protectors and thickly padded gloves.

2. Be sure the bit is secured in place before operation.

3. Under normal operation, the machine is designed to produce vibration, the screws and bolts can come loose, causing a breakdown and accidents. Check tightness of them carefully before running.

4. In cold weather or a long time tool not be used, please keep the tool running without load a few minutes to warm up the grease inside, otherwise hammering function is difficult to get.

5. Be sure you stand stably and no one is below when you using tool is in high location.

6. Hold the tool firmly with two hands.

7. Don't touch any moving parts.

8. Don't leave the tool running itself, operate tool only when hand-held.

9. Don't point the tool to anybody for the bit could fly out in case.



10. When chipping into walls, floors or wherever "live" electrical wire may be encountered, **DON'T TOUCH ANY METAL PARTS OF THE TOOL!** Hold the tool by the insulated grasping surface to prevent electric shock if you chip into a "live" wire.

11. Don't touch the BIT OR PARTS CLOSE TO THE BIT immediately after operation, they may extremely hot and could burn your skin.

12. Any damage and abnormal happen, please stop to use immediately and disconnect it, ask authorized service center to check and repair.

**13. Parts replace:** Only original XINPU's parts can be used to replace by authorized service center.

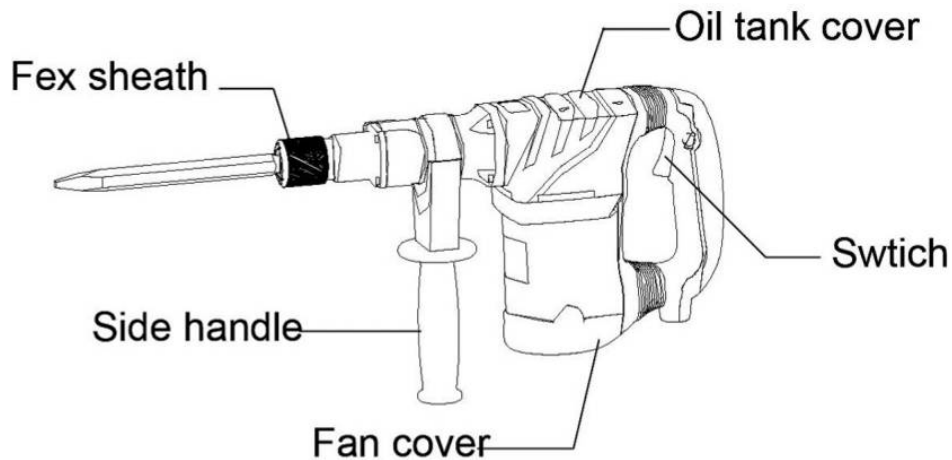
**14. Right use accessories and parts:** Don't use other parts and accessories which not mentioned in the manual otherwise may cause injuries!

**15. Special attention to voltage:** Before connect the power tool, please make sure the rated voltage on the tool can match the power supply, otherwise the power tool may be damaged and cause injuries.

**16. Don't wipe plastic part with solvent:** Solvent such as gasoline, thinner, alcohol etc. these kind of chemical material, are not allowed to use, water or soap are recommended!

## 3. Assembly

### Name of the parts



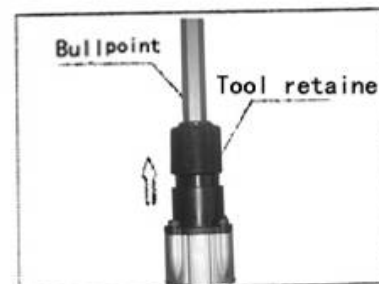
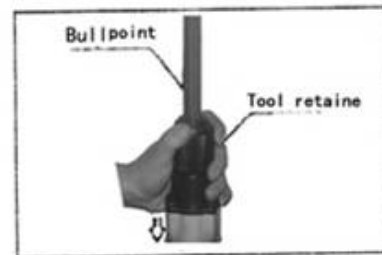
### Mounting tool bits

**Warning: before do it, make sure unplug the machine!**



(1) Pivot the tool retainer to the side.  
(it's difficult to move the retainer with your thumbs, tap it with a hammer.)  
insert the bit into the tool barrel as far as it is, then return the retainer to its original position.

(2) to pull out the bit follow the install procedure in reverse.



## 4. Operation

### Prior to operation

#### 1. Power source

Ensure that the power source to be utilized conforms to the power requirements which specified on the name plate of the hammer.

#### 2. Power switch

Ensure that the power switch is in the position of OFF. If the plug is connected to power receptacle while the power switch is in ON position, the demolition hammer will start operation immediately, which can cause serious accident!



## Operation

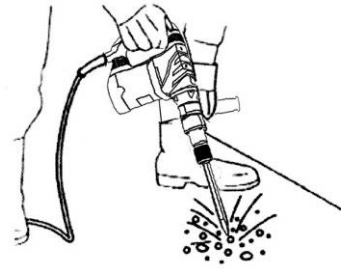
### 1. Switch action

To start the tool, simply pull the trigger.  
Release the trigger to stop, for continuous  
Operation, pull the trigger and then push in  
The lock button, to stop from the locked  
Position, just press the trigger fully, then  
Release it.

2. Operate this demolition hammer by utilizing extra pressure. The performance will be better if it is pressed properly against the work surface.

### Note:

Sometimes the power tool does not begin the striking the stroke even the motor keep running, because oil inside become thick. If the power tool is used at a low temperature, or it is used after a long idle time, this demolition hammer should be kept running for above 5 minutes to warm up.



## 5. Maintenance

### How to replace grease

This demolition hammer is full of air-tight structure to protect against dust and to prevent lubrication leakage.

Therefore, this hammer can be used without lubrication for a long period. Replace grease as described below.



1. After purchase, replace the grease inside each time when carbon brush was changed.  
Before do it, please unplug the plug!

2. Please open the grease cover as picture

Show, wipe off all old grease completely,  
Then replace with new specified grease  
30g, **Oil type is:Egols8466,quantity is 30g.**

too more or too little will cause the  
machine non-properly work.

3. Make sure that lock the cover tightly,  
And assembly the disassembled parts correctly  
4. Clean the machine.



### Maintenance and inspection



Before do any maintenance, ensure unplug the plug.

#### 1. Inspecting the demolition hammer

Use a dull accessory, such as bull point, cutter, etc., will cause motor malfunction and efficiency degraded. Replace with a new one when your accessory is abased.

## 2. Inspecting the mounting screws

Regularly inspect all mounting screws and ensure that they are properly tightened. Any loose should be tighten immediately, failure to do maybe cause serious hazard.

## 3. Inspecting the bit retainer

The retainer may become loose due to excessive use. Make sure the bit shank position is hold securely, if any wear or damage is found, ask the authorized service people to maintenance.

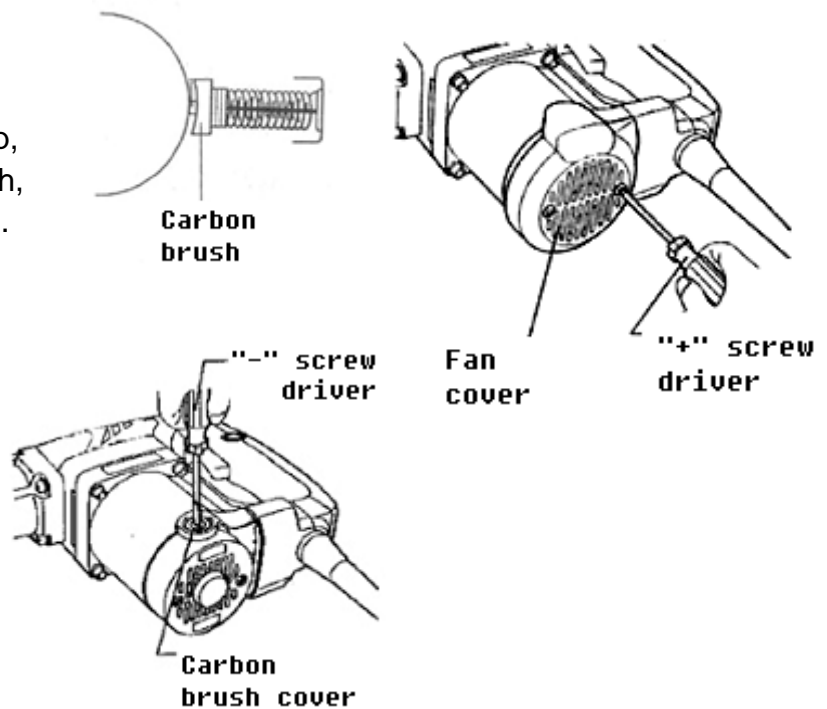
## 4. Maintenance the motor

The motor is the heart of the machine, please avoid any damage to the winding, or any water and oil to wet it.

## 5. Carbon brush replacements

5.1 Carbon brushes are consumable parts, when it becomes worn or "limit worn" it can cause motor trouble, we use auto-stop carbon brush, it stopped automatically when carbon brush worn out, at that time, replace a new couple of them as following procedure:

5.2 Use "+" screw drive to loose the bush holder then use "-" screw drive to loosethe cap, now you can take out of the worn carbon brush, change another pair of specified carbon brush. assembly back the cap and holder correctly and tightly.



## 6. Cleaning

Clean the machine regularly with a soft cloth, preferably after each use. Solvent such as gasoline, thinner, alcohol etc.. These kind of chemical materials are not allowed to use, water or soap are recommended!

## 7. Warranty

For the condition of warranty, please refer to the separately provided warranty card.

## Environment



Faulty and /or discarded electrical or electronic apparatus have to be collected at the appropriate recycling location.

# CE Declaration of conformity

We herewith declare, **Zhejiang Xinpu Industrial & Commercial Co., Ltd.**  
**No.106, 330 National Highway, Huajie Industrial Zone,**  
**Yongkang, Zhejiang 321300, China**

That the following machine complies with the appropriate basic safety and health requirements of the EC Directive based on its design and type, as brought into circulation by us.

In case of alternation of the machine, not agreed upon by us, this declaration will lose its validity.

**Machine Description:** **Demolition Hammer**

**Machine Type:** **XP- 45HD-1**

## **Applicable EC Directive:**

*EC Machinery Directive (98/37/EC)*

*EC Low Voltage Directive (2006/95/EC)*

*EC Directive of Electromagnetic Compatibility (89/336/EEC) amended by 93/68/EEC*

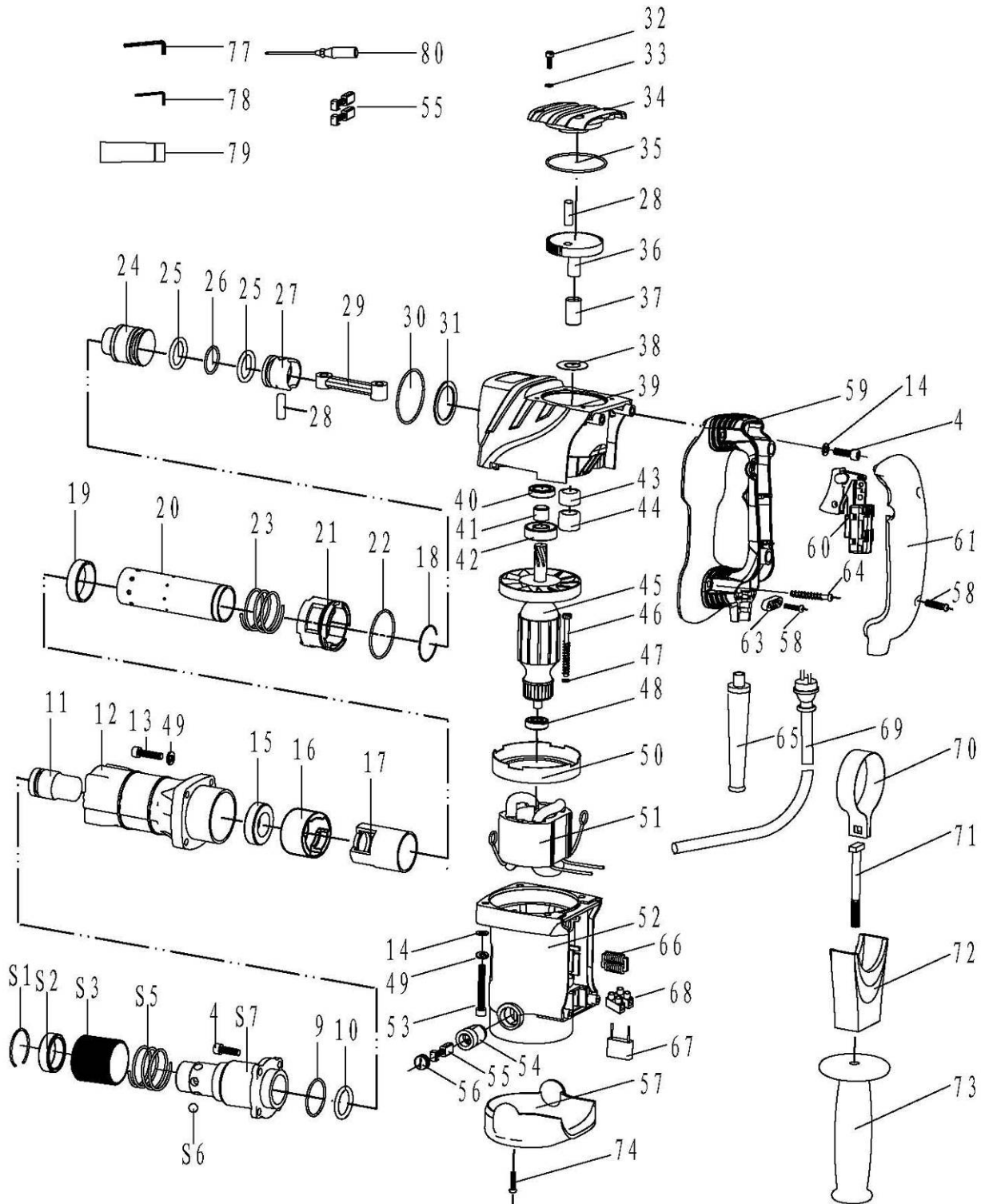
*Noise Directive 2000/14/EC amended by 2005/88/EC*

## **Applicable Harmonized**

**Standards:** EN 60745-1: 2006  
EN 60745-2-6:2003+A1+A11  
EN55014-1:2000+A1+A2  
EN55014-2:1997+A1  
EN61000-3-2:2000+A2  
EN61000-3-3:1995+A1+A2

It's our policy to continuously improve our products and we therefore reserve the right to change the product specification without prior notice.

# XP-45HD-1 Hammer Part Chart



ZheJiang XinPu Designed

**XP-45HD-1 Hammer Parts List**

XP-No	Item No.	Part Describe	Quantity	XP-No	Item No.	Part Describe	Quantity
88210140	S1	Φ28Retaining Ring	1	88231003	42	Ball Bearing 6201 (2RS C3)	1
88273008	S2	Ball Press Ferrule	1	88234001	43	Needle Bearing HK1512	1
88273006	S3	Flex Sheath	1	88234002	44	Needle Bearing BK1516	1
88210008	4	Hex.Socket Bolt M6×20(12.9)	4	88280068	45	Armature (220V-240V)	1
88223004	S5	Compress Spring	1	88280070	45	Armature (110-120V)	1
88210073	S6	Φ8 Steel Ball	6	88280072	45	Armature (100V)	1
88273018	S7	Front Cover	1	88210042	46	Tapping Screw ST4.8×58	2
88263034	9	O Ring Φ36×Φ2	1	88210055	47	Flat WasherΦ5	2
88263033	10	Fluorin O Ring Φ23×Φ3	1	88231005	48	Ball Bearing 608 (2RS C3)	1
88273022	11	Impact Hammer	1	88210052	49	Spring WasherΦ6	8
88290033	12	Alluminum Head	1	88263015	50	Fan Guide	1
88210009	13	Hex.Socket Bolt M6×25	4	88280067	51	Stator (220V-240V)	1
88210056	14	Flat Washer Φ6	6	88280069	51	Stator (110-120V)	1
88263039	15	Impact Block Ring	1	88280071	51	Stator (100V)	1
88263035	16	Hold Ring	1	88263052	52	Housing Ass'y	1
88263036	17	Buffering Ring	1	88210011	53	Hex.Socket Bolt M6×35	4
88223019	18	Steel Wire Block Ring Φ36×1.2	1	88243007	54	Brush Holder	2
88223017	19	Limit Location Ring	1	88243028	55	Carbon Brush	2
88273016	20	Cylinder	1	88243001	56	Brush Cap	2
88290034	21	Cylinder Ferrule	1	88263055	57	Fan Cover	1
88263037	22	O Ring Φ44×Φ1.8	1	88210038	58	Tapping Screw ST4.2×18	4
88223018	23	Cushion Spring	1	88263053	59	Main Handle	1
88273017	24	Impact Piston	1	88243012	60	Switch	1
88263029	25	Fluorin O Ring Φ24×Φ4	2	88263054	61	Main Handle Cover	1
88263030	26	O Ring Φ26×Φ2	1	88210007	62	Hex.Socket Bolt M6×20	2
88263028	27	Gas Press Piston	1	88261010	63	Cord Clip	1
88223020	28	Steel Pin	2	88210041	64	Tapping Screw ST4.8×45	2
88263027	29	Connecting Rod Ass'y	1	88261051	65	Cord Armor	1
88263032	30	O Ring Φ54×Φ2	1	88243008	66	Electricity Feels 0.18μH	1
88223011	31	Cylinder Washer	1	88241005	67	Electric Capacity 0.33μF	1
88210001	32	Hex.Socket Bolt M4×12	4	88210076	68	Rivet	2
88210084	33	Flat Washer Φ4	4	88250000	69	Cord	1
88263051	34	Oil Tank Cover	1	88223010	70	Side Handle Ass'y Steel Tie	1
88263026	35	O Ring Φ56×Φ2.5	1	88210072	71	M8“T” Type Screw	1
88273015	36	Gear	1	88263022	72	Side Handle Ass'y Base	1
88223021	37	Gear Axes Ferrule	1	88263021	73	Side Handle Ass'y	1
88223012	38	Anti-Friction Washer	1	88210036	74	Tapping Screw ST4.2×14	2
88290042	39	Decelerate Box	1	88301003	77	5mm Hex Bar Wrench	1
88263001	39A	O Ring Φ31.5×Φ2	1	88301001	78	3mm Hex Bar Wrench	1
88263031	40	Oil Seal Ring	1	88304012	79	Oil Bottle	1
88223022	41	Armature Axes Ferrule	1	88301007	80	Dual Screw Driver	1