



## Demolition Hammer

Model: *XP-45HC*

### HANDLING INSTRUCTIONS



Before using this XINPU demolition hammer, please carefully read

though these **HANDLING INSTRUCTIONS**. Ensure that you know how the machine works, and how it should be operated. Maintain the machine in accordance with the instructions, and make certain that the machine work correctly, please store this instriation and other enclosed documents with the machine together.



Bj:2008

Zhejiang Xipu Industrial & Commercial Co., Ltd.

106, No. 330 National Road, Huajie Industrial Zone, Yongkang City, Zhejiang 321300, P. R. China

# Application

This hammer should be applied to breaking concrete, chipping off concrete, grooving, bar cutting, and driving piles in installation of piping and wiring, unitary facility installation, machinery installation water supply, and drainage work, interior jobs, harbor facilities and other civil engineering work etc..

## Contents

- 1. Machine information
- 2. Safety instruction
- 3. Assembly
- 4. Operation
- 5. Maintenance

## 1. Machine information

### Technical specifications

Machine Type	XP-45HC
Voltage	AC 230V
Frequency	50Hz
Input power	900W
Impact rate	2900/min
Weight	7.54kg
Impact energy	10.5J
Bit lock style	17mm hexagon flat shank lock system
Sound pressure values (in accordance with 2000/14/EC)	89dB (A)
Guaranteed Sound power values (in accordance with 2000/14/EC)	105dB (A)
Vibration	Main handle: $a_{h,Cheq}$ : 23.45 m/s <sup>2</sup> K=2.268m/s <sup>2</sup> Auxiliary handle: $a_{h,Cheq}$ : 16.193 m/s <sup>2</sup> K=3.25m/s <sup>2</sup>

### Standard accessories

Hexagon bar wrench 5mm(for M6)	1 piece
grease tank cover wrench	1 piece
One box of grease	30g (one box)
Bull point chisel(17*280mm)	1 piece
flat chisel(17*280mm)	1 piece
Carbon brush(6*10*14mm)	2 pieces

## Optional accessories (sold separately)

Notice: Optional accessories (sold separately) are recommended only for **XINPU** tool for specified purpose in manual, any other brand accessories or attachments used may present risk of injury.

### 1. Point chisel Hexagon size17\*280 length (Unit: mm)



### 2. Flat chisel Hexagon size17\*280 length (Unit: mm)



### 3. Big flat chisel Hexagon size17\*280 length\*50Cutting width (Unit: mm)



### 4. Tine spade Hexagon size17\*500 length (Unit: mm)



### 5. Groove chisel Hexagon size17\*280 length (Unit: mm)



### 6. 4PCS KITS Hexagon size17\*280 length (Unit: mm)



### 7. Lubricate grease one box 30g



## 2. Safety instructions

In this operator's manual/or machine's labels following symbols are used:



Read the manual carefully



Accordance with essential applicable safety of European directives



Denote risk of personal injury, loss of life or damage to the tool in case of nonobservance of the instruction in this manual.



Indicate electrical shock hazard.



Immediately unplug the plug from the main electricity in the case that the cord gets damage and during maintenance.



Wear ear and eye protection.



Faulty and /or discarded electrical or electronic apparatus have to be collected at the appropriate recycling location.



The guaranteed Noise Value according to Noise Directive

## General Power Tool Safety Warnings



**WARNING** Read all safety warnings and all instructions *Failure to follow all warnings and instructions may result in electric shock, fire and/or serious injury.*

Save all warnings and instructions for future reference

The term “power tool” in the warnings refer to your mains operated (corded) power tool or battery operated (cordless) power tool.

### 1) Work area

- a) Keep work area clean and well lit. *Cluttered and dark areas invite accidents.*
- b) Do not operate power tools in explosive atmospheres, such as in the presence of flammable liquids, gases or dust. *Power tools create sparks which may ignite the dust or fumes.*
- c) Keep children and bystanders away while operating a power tool. *Distractions can cause you to lose control.*

### 2) Electrical safety

- a) Power tool plugs must match the outlet. Never modify the plug in any way. Do not use any adapter plugs with earthed (grounded) power tools. *Unmodified plugs and matching outlets will reduce risk of electric shock.*
- b) Avoid body contact with earthed or grounded surfaces such as pipes, radiators, ranges and refrigerators. *There is an increased risk of electric shock if your body is earthed or grounded.*
- c) Do not expose power tools to rain or wet conditions. *Water entering a power tool will increase the risk of electric shock.*
- d) Do not abuse the cord. Never use the cord for carrying, pulling or unplugging the power tool. Keep cord away from heat, oil, sharp edges or moving parts. *Damaged or entangled cords increase the risk of electric shock.*
- e) When operating a power tool outdoors, use an extension cord suitable for outdoor use. *Use of a cord suitable for outdoor use reduces the risk of electric shock.*
- f) If operating a power tools in a damp location is unavoidable, use a residual current device (RCD) protected supply. *Use of an RCD reduces the risk of electric shock.*

### 3) Personal safety

- a) Stay alert, watch what you are doing and use common sense when operating a power tool. Do not use a power tool while you are tired or under the influence of drugs, alcohol or medication. *A moment of inattention while operating power tools may result in serious personal injury.*
- b) Use safety equipment. Always wear eye protection. *Protective equipment such as dust mask, non-skid safety shoes, hard hat, or hearing protection used for appropriate conditions will reduce personal injuries.*
- c) Avoid accidental starting. Ensure the switch is in the off position before plugging in. *Carrying power tools with*

*your finger on the switch or plugging in power tools that have the switch on invites accidents.*

- d) Remove any adjusting key or wrench before turning the power tool on. *A wrench or a key left attached to a rotating part of the power tool may result in personal injury.*
- e) Do not overreach. Keep proper footing and balance at all times. *This enables better control of the power tool in unexpected situations.*
- f) Dress properly. Do not wear loose clothing or jewellery. Keep your hair, clothing and gloves away from moving parts. *Loose clothes, jewellery or long hair can be caught in moving parts.*
- g) If devices are provided for the connection of dust extraction and collection facilities, ensure these are connected and properly used. *Use of these devices can reduce dust related hazards.*

#### 4) Power tool use and care

- a) Do not force the power tool. Use the correct power tool for your application. *The correct power tool will do the job better and safer at the rate for which it was designed.*
- b) Do not use the power tool if the switch does not turn it on and off. *Any power tool that cannot be controlled with the switch is dangerous and must be repaired.*
- c) Disconnect the plug from the power source before making any adjustments, changing accessories, or storing power tools. *Such preventive safety measures reduce the risk of starting the power tool accidentally.*
- d) Store idle power tools out of the reach of children and do not allow persons unfamiliar with the power tool or these instructions to operate the power tool. *Power tools are dangerous in the hands of untrained users.*
- e) Maintain power tools. Check for misalignment or binding of moving parts, breakage of parts and any other condition that may affect the power tools operation. If damaged, have the power tool repaired before use. *Many accidents are caused by poorly maintained power tools.*
- f) Keep cutting tools sharp and clean. *Properly maintained cutting tools with sharp cutting edges are less likely to bind and are easier to control;*
- g) Use the power tool, accessories and tool bits etc., in accordance with these instructions and in the manner intended for the particular type of power tool, taking into account the working conditions and the work to be performed. *Use of the power tool for operations different from intended could result in a hazardous situation.*

#### 5) Service

- a) Have your power tool serviced by a qualified repair person using only identical replacement parts. *This will ensure that the safety of the power tool is maintained.*

#### Special requirements for Chisel

- **Wear ear protectors with impact drills.** *Exposure to noise can cause hearing loss.*
- **Use auxiliary handles supplied with the tool.** *Loss of control can cause personal injury.*

## Additional safety rules:



1. Wear a hard hat (safety helmet), safety glasses and /or face shield. It is also highly recommended that you wear a dust mask, ear protectors and thickly padded gloves.

2. Be sure the bit is secured in place before operation.

3. Under normal operation, the machine is designed to produce vibration, the screws and bolts can come loose, causing a breakdown and accidents. Check tightness of them carefully before running.

4. In cold weather or a long time tool not be used, please keep the tool running without load a few minutes to warm up the grease inside, otherwise hammering function is difficult to get.

5. Be sure you stand stably and no one is below when you using tool is in high location.

6. Hold the tool firmly with two hands.

7. Don't touch any moving parts.

8. Don't leave the tool running itself, operate tool only when hand-held.

9. Don't point the tool to anybody for the bit could fly out in case.



10. When chipping into walls, floors or wherever "live" electrical wire may be encountered, **DON'T TOUCH ANY METAL PARTS OF THE TOOL!** Hold the tool by the insulated grasping surface to prevent electric shock if you chip into a "live" wire.

11. Don't touch the BIT OR PARTS CLOSE TO THE BIT immediately after operation, they may extremely hot and could burn your skin.

12. Any damage and abnormal happen, please stop to use immediately and disconnect it, ask authorized service center to check and repair.

**13. Parts replace:** Only original XINPU's parts can be used to replace by authorized service center.

**14. Right use accessories and parts:** Don't use other parts and accessories which not mentioned in the manual otherwise may cause injuries!

**15. Special attention to voltage:** Before connect the power tool, please make sure the rated voltage on the tool can match the power supply, otherwise the power tool may be damaged and cause injuries.

**16. Don't wipe plastic part with solvent:** Solvent such as gasoline, thinner, alcohol etc. these kind of chemical material, are not allowed to use, water or soap are recommended!

## 3. Assembly

### Name of the parts



### Mounting tool bits

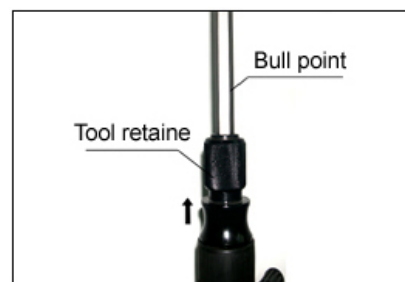
**Warning: before do it, make sure unplug the machine!**



(1) Pivot the tool retainer to the side. (it's difficult to move the retainer with your thumbs, tap it with a hammer.) insert the bit into the tool barrel as far as it is, then return the retainer to its original position.



(2) to pull out the bit follow the install procedure in reverse.



## 4. Operation

### Prior to operation

#### 1. Power source

Ensure that the power source to be utilized conforms to the power requirements which specified on the name plate of the hammer.

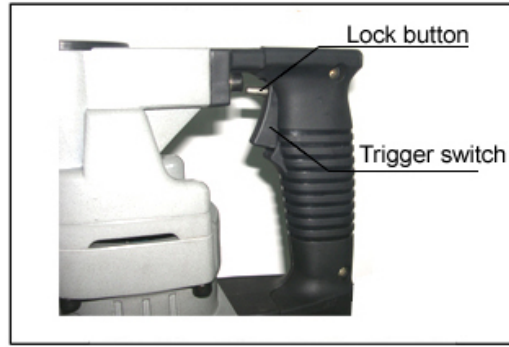
#### 2. Power switch

Ensure that the power switch is in the position of OFF. If the plug is connected to power receptacle while the power switch is in ON position, the demolition hammer will start operation immediately, which can cause serious accident!

## Operation

### 1. Switch action

To start the tool, simply pull the trigger. Release the trigger to stop, for continuous Operation, pull the trigger and then push in The lock button, to stop from the locked Position, just press the trigger fully, then Release it.



2. Operate this demolition hammer by utilizing extra pressure. The performance will be better if it is pressed properly against the work surface.

### Note:

Sometimes the power tool does not begin the striking the stroke even the motor keep running, because oil inside become thick. If the power tool is used at a low temperature, or it is used after a long idle time, this demolition hammer should be kept running for above 5 minutes to warm up.

## 5. Maintenance

### How to replace grease

This demolition hammer is full of air-tight structure to protect against dust and to prevent lubrication leakage.

Therefore, this hammer can be used without lubrication for a long period. Replace grease as described below.



1. After purchase, replace the grease inside each time when carbon brush was changed. Before do it, please unplug the plug!

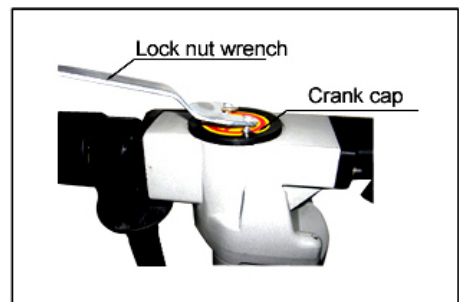
2. Please open the grease cover as picture

Show, wipe off all old grease completely,  
Then replace with new specified grease  
30g, **Oil type is:Egols8466,quantity is 30g.**

too more or too little will cause the  
machine non-properly work.

3. Make sure that lock the cover tightly,  
And assembly the disassembled parts correctly

4. Clean the machine.





## Maintenance and inspection

Before do any maintenance, ensure unplug the plug.

### 1. Inspecting the demolition hammer

Use a dull accessory, such as bull point, cutter, etc., will cause motor malfunction and efficiency degraded. Replace with a new one when your accessory is abased.

### 2. Inspecting the mounting screws

Regularly inspect all mounting screws and ensure that they are properly tightened. Any loose should be tighten immediately, failure to do maybe cause serious hazard.

### 3. Inspecting the bit retainer

The retainer may become loose due to excessive use. Make sure the bit shank position is hold securely, if any wear or damage is found, ask the authorized service people to maintenance.

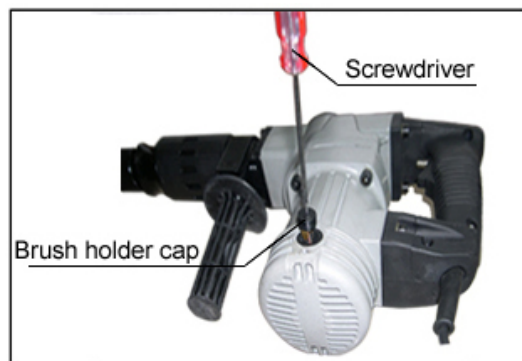
### 4. Maintenance the motor

The motor is the heart of the machine, please avoid any damage to the winding, or any water and oil to wet it.

### 5. Carbon brush replacements

5.1 Carbon brushes are consumable parts, when it becomes worn or "limit worn" it can cause motor trouble, we use auto-stop carbon brush, it stopped automatically when carbon brush worn out, at that time, replace a new couple of them as following procedure:

5.2 Use the screwdriver to remove the carbon brush cover, take out the worn carbon brushes, insert the new ones and tighten the covers with screws.



### 6. Cleaning

Clean the machine regularly with a soft cloth, preferably after each use. Solvent such as gasoline, thinner, alcohol etc.. These kind of chemical materials are not allowed to use, water or soap are recommended!

### 7. Warranty

For the condition of warranty, please refer to the separately provided warranty card.

### Environment



Faulty and /or discarded electrical or electronic apparatus have to be collected at the appropriate recycling location.

# CE Declaration of conformity

We herewith declare, **Zhejiang Xinpu Industrial & Commercial Co., Ltd.**  
**No.106, 330 National Highway, Huajie Industrial Zone,**  
**Yongkang, Zhejiang 321300, China**

That the following machine complies with the appropriate basic safety and health requirements of the EC Directive based on its design and type, as brought into circulation by us.

In case of alternation of the machine, not agreed upon by us, this declaration will lose its validity.

**Machine Description:** **Demolition Hammer**

**Machine Type:** **XP- 45HC**

## **Applicable EC Directive:**

*EC Machinery Directive (98/37/EC)*

*EC Low Voltage Directive (2006/95/EC)*

*EC Directive of Electromagnetic Compatibility (89/336/EEC) amended by 93/68/EEC*

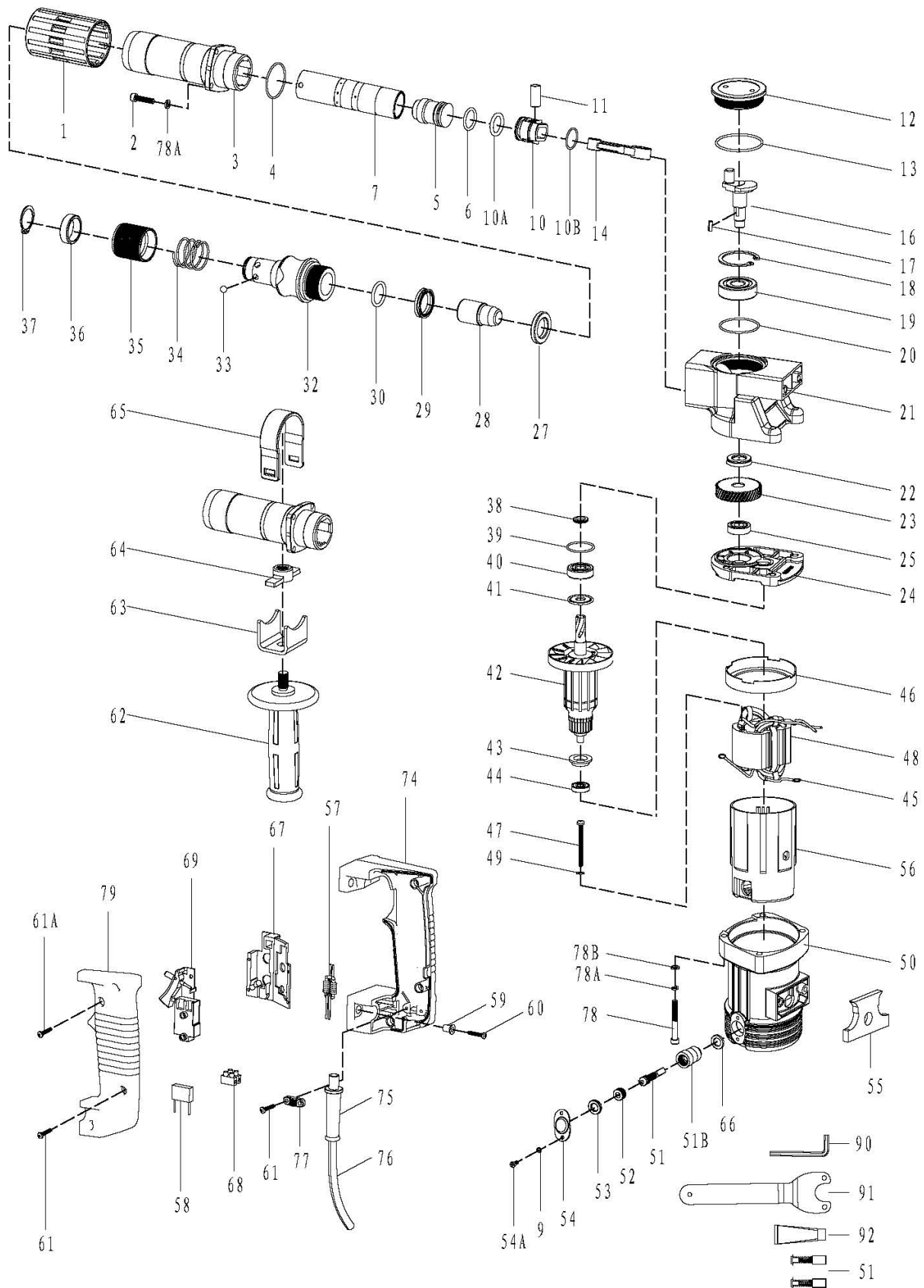
*Noise Directive 2000/14/EC amended by 2005/88/EC*

## **Applicable Harmonized**

**Standards:** EN 60745-1: 2006  
EN 60745-2-6:2003+A1+A11  
EN55014-1:2000+A1+A2  
EN55014-2:1997+A1  
EN61000-3-2:2000+A2  
EN61000-3-3:1995+A1+A2

It's our policy to continuously improve our products and we therefore reserve the right to change the product specification without prior notice.

# XP-45HC/HS Hammer Part Chart



## XP-45HC Hammer Parts List

XP-No	Item No.	Part Describe	Quantity	XP-No	Item No.	Part Describe	Quantity
88263004	1	Rubber Ring	1	88236001	44	Ball Bearing NMB 608	1
88210009	2	Hex.socket Bolt M6X25	4	88243003	45	Brush Terminal	2
88290085	3	Outside Cover Of Cylinder	1	88263015	46	Fan Guide	1
88263009	4	O Ring $\Phi 44 \times \Phi 2$	1	88210042	47	Tapping Screw ST4.8x58	2
88273012	5	Impact Piston	1	88280016	48	Stator 220V-240V	1
88263007	6	Fluorin O Ring $\Phi 24 \times \Phi 3$	1	88280037	48	Stator110-120V	1
88273009	7	Cylinder	1	88280035	48	Stator100V	1
88210050	9	$\Phi 4$ Spring Washer	4	88210055	49	$\Phi 5$ Flat Washer	2
88263097	10	Gas Press Piston	1	88290058	50	Housing Ass'y	1
88263098	10A	Fluorin O Ring $\Phi 22 \times \Phi 4$	1	88243028	51	Carbon Brush	2
88263099	10B	O Ring $\Phi 24 \times \Phi 1.8$	1	88243004	51B	Brush Holder	2
88223020	11	Steel Pin	1	88243001	52	Brush Cap	2
88263002	12	Oil Tank Cover	1	88263014	53	Cap Rubber	2
88263003	13	O Ring $\Phi 55 \times \Phi 2.5$	1	88210031	54A	Machine Screw M4X8	4
88263096	14	Connecting Rod Ass'y	1	88223009	54	Cap Cover	2
88273002	16	Crank Shaft	1	88263018	55	Insulate The Mat	1
88210168	17	Palt Key 4x12	1	88263095	56	Stator Ass'y	1
88210067	18	Retaining Ring $\Phi 47$	1	88241009	57	Electricity Feels 0.18 $\mu$ H	1
88232014	19	Ball Bearing 6303 RS	1	88241005	58	Electric Capacity 0.33 $\mu$ F	1
88263006	20	O Ring $\Phi 46.5 \times \Phi 2$	1	88221023	59	Distance Piece	4
88290029	21	Decelerate Box	1	88210007	60	Hex.Socket Bolt M6X20	4
88263005	22	Oil Seal Ring $\Phi 18 \times \Phi 30 \times 6$	1	88210038	61	Tapping Screw ST4.2x18	3
88273041	23	Gear	1	88210132	61A	Tapping Screw ST4.2x22	2
88290030	24	Inner Cover	1	88263013	62	Side Handle Ass'y	1
88232002	25	Ball Bearing 6001 (2RZ C2)	1	88223002	63	Side Handle Ass'y Base	1
88273005	27	Impact Block Ring	1	88273007	64	Handle Nut	1
88273021	28	Impact Hammer	1	88223001	65	Side Handle Ass'y Clamp	1
88263012	29	L- Ring $\Phi 27 \times \Phi 36 \times 6.5$	1	88243005	66	Insulate Washer	2
88263010	30	Fluorin O Ring $\Phi 26.4 \times \Phi 3.5$	1	88261019	67	Support (C )	1
88273001	32	Front Cover	1	88210076	68	Rivet	4
88210073	33	$\Phi 8$ Steel Ball	6	88241004	69	Switch	1
88223004	34	Compress Spring	1	88261017	74	Main Handle	1
88273006	35	Flex Sheath	1	88261016	75	Cord Armor	1
88273008	36	Ball Press Ferrule	1	88250000	76	Cord	1
88210140	37	$\Phi 28$ Retaining Ring	1	88261010	77	Cord Clip	1
88223003	38	Whorl Seal Ring	1	88210052	78A	Spring Washer $\Phi 6$	8
88263001	39	O Ring $\Phi 31.5 \times \Phi 2$	1	88210057	78B	$\Phi 6 \times \Phi 10.5$ Flat Washer	4
88236010	40	Ball Bearing NSK 6201 DDU	1	88210013	78	Hex.Socket Bolt M6X50	4
88263008	41	Dust Seal	1	88261018	79	Main Handle Cover	1
88280017	42	Armature 220V-240V	1	88301003	90	5mm Hex Bar Wrench	1
88280038	42	Armature 110-120V	1	88301010	91	Wrench For Tank Cover	1
88280036	42	Armature 100V	1	88304012	92	Oil Bottle	1
88263017	43	Armature Insulation Washer	1				